

TASMAN
REPORT

Council news and interviews

Introducing the Tasman Report –
on air and podcast

Tasman Report is a new fortnightly audio news wrap designed to help you stay connected with what's happening across Tasman District.

Each episode brings together stories from Council committees and community boards, alongside updates from staff working across all areas of Council, such as parks and reserves, infrastructure, biosecurity, ports and marine, planning, and emergency management.

You'll hear a selection of news stories plus one longer feature, giving you the chance to explore local projects and topics in more depth.

We've partnered with community access radio FreshFM to bring the Tasman Report to air and online. Episodes are broadcast on FreshFM and available as podcasts on FreshFM, Spotify, Apple, and iHeart platforms, making it easier to listen wherever you are.

This partnership also strengthens our ability to share important local news and critical updates, including emergency information, with our communities.

Tasman Report complements our existing channels such as Newsline, our website, social media and Antenna – giving you another easy way to hear directly from us.

You can tune in to the Tasman Report on FreshFM every second Monday at 5.30 pm. There's also Tim Time, a fortnightly informal chat with Mayor Tim King, airing every second Tuesday at 9.15 am.

For the latest broadcast times, check the FreshFM programme schedules page.

The Tasman Report is part of our ongoing commitment to keeping residents informed and connected, and dedicated council time slots give residents a reliable source for Tasman news and updates.

Visit freshfm.co.nz/tasman-report.

WATER WISE



6 or 1 biofoul rules not a '6-7' scenario

To protect our ecosystem and aquaculture industry at Port Tarakohe, we need to take measures to ensure we do not introduce harmful pests that may be transported from your vessel.

Biofouling is the build-up of algae and organisms on underwater surfaces, and it's a major pathway for invasive marine pests. They can spread quickly, outcompeting native species and damaging ecosystems.

If you have travelled from ports and marinas through Lyttelton or the North Island, you will need to provide proof that your vessel has been appropriately cleaned or treated before entering Port Tarakohe.

This is where our '6 or 1 rule' comes into effect, a requirement of boat owners to ensure they're helping prevent the spread of marine pests.

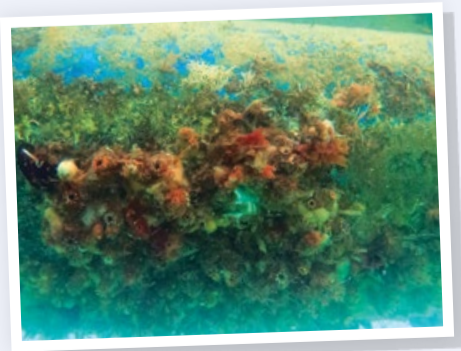
We'll need proof (invoices or receipts are ideal) that your boat's hull was antifouled (painted with anti-barnacle paint) within the last six months (the 6) or was lifted out of the water and washed by a professional, a commercial diver, or at a boatyard within the last month (the 1).

If you're looking to secure a berth or mooring in Tarakohe Harbour, you'll need to contact the Harbour Manager or complete an application on our website prior to entry.

More information can be found at tasman.govt.nz/port-tarakohe.

Measures like these are all part of our efforts to keep unwanted pest hitchhikers like Mediterranean fanworm (*Sabella spallanzanii*), sea squirt (*Styela clava*), and invasive seaweed (*Undaria pinnatifida*) from establishing themselves in Tasman.

If you see any suspicious organisms, report them to MPI or biosecurity@tasman.govt.nz and dispose of them on land, never in the water.



EMERGENCY EFFORTS



Flood recovery continues to move forward

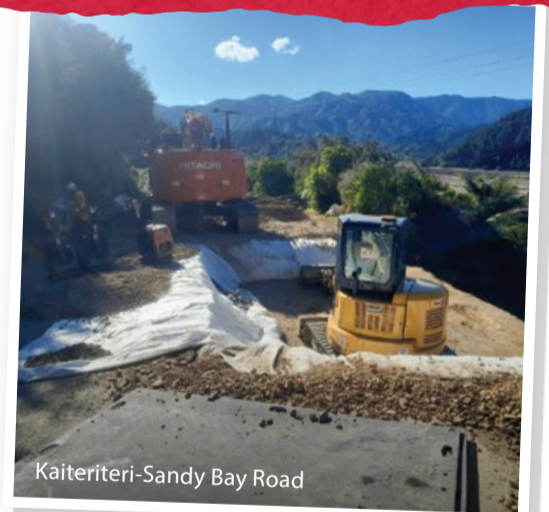
It's nearly eight months since the region was hit by the first of two devastating storms that caused widespread damage and disrupted so many people's lives.

While for some residents those dark wet weeks in the middle of winter are a fading memory, for others across Tasman District there are still daily reminders of nature's fury.

We are still doing a lot of work in many places.

The largest amount of work is in our rivers, and we're going to have crews working full-time in the river network for the next 18 months to two years. That work includes rebuilding and re-forming stopbanks and adding protection where we can, starting in the highest risk areas.

We're also gearing up for a big willow planting project this winter, which will assist with retaining riverbanks.

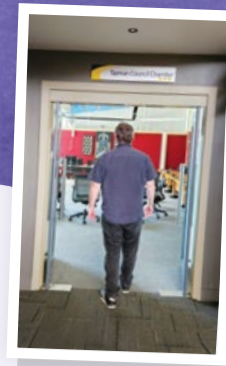


Kaiteriteri-Sandy Bay Road

Our roading network also took a hammering in the storms, and we're about to start on some big projects. A lot of assessments have been done, and geotechnical work has been completed, so we're ready to launch some of the big projects like the Mārahau Hill and Motueka River West Bank Road.

Storm waste is another issue we're still dealing with, which includes silt and all sorts of complex waste like woody waste, bits of trees, plastic, wire and fencing. We're trying to recover and reuse what we can instead of sending it to landfill.

... And finally, we're using the lessons and knowledge gained from these storms to plan and prepare for dealing with future flooding emergencies.



Community Grants gets kids moving

Getting kids moving is one of the aims of the Richmond Waimea Toy Library, and with help from our Community Grants Scheme, they can get more on the move.

The Toy Library lends games, puzzles and interactive toys to keep youngsters entertained and active, with borrowers able to hire up to 10 items at a time.

The library that operates from 20c Gladstone Road, next to Jubilee Park, received nearly \$1,000 in last year's round of grants. The money helped purchase exciting new toys for tamariki in an initiative called 'Get Kids Moving'.

The library says the support had a real impact and strengthened their ability to connect with local whānau, grow the toy collection, and keep play accessible for everyone in our community.

The Richmond Waimea Toy Library is open three days a week; Tuesdays 9.30 pm – 12.30 pm, Thursdays 2.00 pm – 4.00 pm, and Saturdays 9.30 am – 12.30 pm.

If your group or organisation is looking for financial assistance, it may be eligible for money from our Community Grants Scheme.

These grants support organisations whose work brings value to our communities, enhancing well-being and helping Tasman thrive.

Funding can go towards one-off projects, service delivery, project development, and partial administration costs.

Applications open on 1 May and close on 31 July each year. Find out more about our Community Grants at tasman.govt.nz/grants.



Council workshop doors now open to the public

In recent weeks, we've been outlining the changes we've made to the meeting and committee structure for this Council triennium.

Perhaps the most visible of these changes is the shift to make elected member workshops open to the public by default.

We're pleased to bring this opportunity to fruition as it will increase transparency for our community while also aligning with the Ombudsman's expectations around public workshops.

Workshops are not considered meetings under the Local Government Official Information and Meetings Act 1987 (LGOIMA), as no decisions are made at them.

However, they are valuable opportunities for Elected Members to gain more knowledge about an issue and discuss it in depth, to support future decision-making.

And now we welcome you to join us in person to gain your own insights and perspective.

Although most workshops will be open to the public, they will not be livestreamed, nor will there be time set aside for a public forum.

If you can't attend a workshop, don't worry. We will publish open workshop material on the website before the workshop, and brief summaries afterwards.

Confidential workshops will still occur – either in full or as portions of otherwise open workshops – when there are reasons for material or discussions to be withheld.

We expect most workshops to be held on Wednesdays from around 10.00 am. As workshops often take place at short notice, they won't be published in Newsline with other Council and Committee meetings, but the schedule and topics will always be listed on our website meetings calendar in advance – visit tasman.govt.nz/meetings-calendar.

Absolute "good bugger" recognised

A real can-do person with more than four decades of dedication to the Motueka and Riwaka communities, Carol Fowler is another recipient of our 2025 Outstanding Community Service Awards.

She's been a dedicated volunteer in the community since the day she arrived in the District more than 40 years ago.

Carol's early contributions were with the Riwaka Rugby Club – running the kitchen and helping with fundraising while also serving on the PTA and Board of Trustees at Riwaka School.



As her son grew older, she became involved in supporting high school sports, particularly the touch rugby and rugby teams, and that connection grew into employment as the district truancy officer, which she supplements with voluntary work at every opportunity.

In nominating Carol Fowler, Marieann Keenan and Edna MacLean say she goes the extra mile for families and individuals, way beyond her job description and paid employment, often finding food, housing, and clothing for people in need. She quietly uses her wide range of contacts to ease people's way.

During last year's floods, Carol set up a food hub at Motueka High School while dealing with her own flood damage, organising and delivering relief aid across the District – along with husband John, she has always helped in civil defence emergencies.

Carol is best summed up by Marieann and Edna as selfless, non-judgmental, kind and funny. They say the people she works with love and admire her energy, compassion and humanity.

Carol Fowler is 100% one of life's good buggers.

Let's make cents of Community Funding

We are taking a fresh look at how we provide community funding and grants.

Our aim is to ensure our approach is fair, transparent, easy to navigate, and reflects what our communities need now and into the future.

Every year, we support local organisations, volunteers and initiatives that help make Tasman a strong, connected, and resilient place to live.

As these groups and communities evolve, so too must our funding approach, so we are exploring ways to improve our processes and make funding more efficient, without increasing the overall budget.

We're considering changes to make funding more consistent, better aligned with community outcomes, easier to access, and clearer in terms of reporting and accountability.

We want to hear your feedback – whether you regularly apply for funding or have never applied before, your experience and insight matter.

We're keen to hear your views on potential improvements to the funding system, any challenges or barriers you've experienced, and what would help your organisation or community succeed.

Your feedback will help shape the options we workshop with our Elected Members in March.

Share your thoughts by Friday 6 March at shape.tasman.govt.nz/community-funding.




NELSON MARLBOROUGH WASTE

When was the last time you emptied your septic tank?

We recommend every three years on average to avoid any drainage field issues. Don't delay, book in an empty today.

FREEPHONE 0800 725 326
EMAIL bookings@nmwaste.co.nz

nmwaste.co.nz

Surveying and Resource Management

- Subdivision Design and Management
- Resource Consents and Planning
- Land Development Engineering
- Project Management

81 Selwyn Place, Nelson
 Phone 03 548 4422
staigsmith.co.nz

STAIG & SMITH LTD
 ENHANCING THE LAND





New bins receiving batteries

A fire in one of our refuse compactors at Mariri Resource Recovery Centre near Motueka just before Christmas has raised further concerns about the way some people are discarding their refuse – particularly batteries and dangerous goods.

The fire is thought to have been caused by lithium-ion batteries igniting in the refuse compactor container.

However, and more concerning, was when the burning contents were pulled out to be extinguished by firefighters; several potentially explosive pressurised drums were discovered.

It's understood that these discarded drums once contained industrial adhesives and still had chemical residue in them, which was potentially highly flammable. If they had exploded, they could have caused serious injury.

Commercial premises are responsible for the correct disposal of hazardous waste that they produce, and there are several companies locally that specialise in the disposal of commercial hazardous waste.

Meanwhile, the rollout of our new battery collection system is finished, with specially designed bins ready to receive discarded batteries.

Look out for the new bins where you can dispose of all used batteries up to the size of a laptop battery, including household batteries like rechargeables, cellphone batteries, small portable power banks, and even single-use batteries like those used in hearing aids, cameras, toys, clocks, and radios.

The new bins are now on site at all our Resource Recovery Centres, in Richmond, Mariri, Tākaka, Murchison and Collingwood.

Similarly, there are battery recycling stations in Tapawera (near the Four Square) and Wakefield (next to the public toilets in the town centre), where you can drop your small undamaged batteries.



Little Steps to reduce waste

We are keen to help reduce the amount of rubbish going to landfill, and our Waste Minimisation Grants can help with funding initiatives that do this.

One of our latest grants has gone to 'Little Green Steps', a group supplying and promoting the use of cloth nappies instead of disposables for newborn babies.

A newborn can go through at least eight nappies every 24 hours, which means that by using cloth instead of disposables, around 728 disposable nappies will be diverted from landfill over a three-month period. At about 40 grams per nappy, that's about 36.4 kg of waste.

Disposable nappies are one of the biggest contributors to household waste for families with new babies, making up 3% of the waste in our landfills.



Little Green Steps sought funding to purchase full newborn cloth nappy sets to be loaned to Tasman District families for this early stage of life.

Newborn cloth nappies can cost the same amount as a regular-sized cloth nappy, so many families don't wish to invest in newborn sizing for only three months of use.

By reducing financial barriers through a koha or low-cost hire model, the initiative makes cloth nappies accessible to a wider range of families.

Families are guided through methods of washing and sanitising the nappies, providing confidence that they are just as clean and safe as new ones.

You can find Little Green Steps on Facebook.

We have Waste Minimisation Grants for events, projects, and activities by schools, early childhood centres and community organisations. Find out more at tasman.govt.nz/waste-minimisation-grants.



Soft plastics a hard no in your recycling bin

We can't take soft plastics like bread bags and chip/biscuit wrappers in our yellow recycling bins, but you can take them to your local Warehouse, Woolworths, New World, and Fresh Choice stores.

Visit recycling.kiwi.nz for more information and to find a location near you. Here's a hint – if it scrunches easily in your hand, it's a soft plastic.

We'll have a different recycling tip in each Newsline this year, so keep an eye out!

Putting a halt to Himalayan balsam in Hoult Valley



Council summer student Nathan Greenough

A huge thanks to a vigilant Hoult Valley resident who after reading our recent article on Himalayan balsam, contacted our Biosecurity team after identifying this serious pest on his property.

Further incursions were then also found on nearby Hoult Valley properties, indicating this area as the likely main seed source for the plants that had been randomly dispersed along the Wai-iti River, via Hoult Valley Stream which flows into the river.

While the original source of these incursions had previously been unclear, it is great to have now tracked it down so our Biosecurity team could take care of it and stop the spread.

We really appreciate members of the Tasman community getting in touch in response to the pest stories we share, as these reports often lead to important new discoveries.

This is a great example of the Council and community working together to stop an unwanted pest taking over our District.

Himalayan balsam (*Impatiens glandulifera*) is an Eradication species under the Tasman Nelson Regional Pest Management Plan. It's an attractive annual plant that can rapidly grow to 2.5m tall, appearing over summer. The plant has pretty pink flowers that develop into seed pods in February/March. Each seed pod can contain 4 – 16 seeds and has the unique characteristic of being spring-loaded. When the pods mature, they explode with enough force to propel seeds up to 7m away from the parent plant.

Himalayan balsam prefers to inhabit riparian margins and wetland areas, though it can grow just about anywhere. This plant competes with native plants for light, space, and pollinators (bees). It seeds heavily, allowing it to spread down waterways where it can dominate entire stream margins and terraces within a few years.

If you have Himalayan balsam in your garden, or you've noticed it around Tasman, please contact our Biosecurity team at biosecurity@tasman.govt.nz or on 03 543 8400.

River catchment study could accelerate New Zealand's climate response

We're always excited to hear of new ideas and efforts to improve the environment – especially those which aim to benefit the health of our catchment areas.

Over the next 12 months, Kotahitanga mō te Taiao Alliance (KMTT) and The Nature Conservancy Aotearoa New Zealand (TNC) are aiming to develop a restoration model that could be used across New Zealand, focusing on collaboration across whole river catchments for maximum benefit.

A new collaborative study will investigate the most affordable and effective ways of restoring native habitats across the fragmented lowlands of the Motueka, Moutere and Riuwaka river catchments in Tasman District.

In collaboration with nine iwi, five councils and several Government departments, and with the support of TNC, KMTT advances projects that protect and restore forests, wetlands, waterways and the surrounding oceans, working across 3.4 million hectares in the top of the south and Buller/Kawatiri.

As key partners, we look forward to what outcomes come from the study –

particularly around different ways of funding the restoration work – and the potential ways we can incorporate them into the lowland areas around Tasman.

Our catchments are vital to the community, and we are keen to pursue the long-term benefits of restoration work.

Reestablishing native cover over large areas could accelerate New Zealand's climate response, preserve globally significant biodiversity and support healthy, thriving communities.

At this stage, our involvement with the study extends to providing resources and staff time. This includes recently produced modelling on potential nature-based solutions in the Motueka catchment, as well as insights from work carried out at existing sites.

Pictured below: Freshwater eels/tuna are threatened by sedimentation in freshwater habitat in the lowlands of Te Taihuhu. Image by Colin Marshall.



HOUSE & LAND PACKAGES AVAILABLE IN MARSDEN PARK

Contact your local GJ's Nelson team today.

03 543 9502 gjgardner.co.nz

G.J. Gardner. HOMES



Golden Bay Community Board

The Golden Bay Community Board is committed to representing our community and ensuring residents have meaningful opportunities to share their views.

We have planned a series of drop-in sessions at several outlying halls across the Bay. These sessions provide an opportunity for residents to raise local issues directly with the Board, and we look forward to engaging with community members.

The drop-in sessions are designed to encourage open conversation as we plan for the future of Mohua Golden Bay. With our community's diversity, creativity, and focus on sustainability, now is an important time to connect and collaborate.

Sessions will run from 6.00 pm to 8.00 pm at the following locations:

- Pākawau Hall – 2 March
- Bainham Hall – 3 March
- Onekaka Hall – 4 March
- Golden Bay Rec Park Centre – 5 March
- East Tākaka Hall – 9 March
- Upper Tākaka Hall – 10 March

These sessions will become a regular initiative, with most future events held in Tākaka and Collingwood. Some will feature guest presenters offering expert insights, along with opportunities for questions and discussion. We will ensure these are well advertised.

A resilience hui will also be held in Tākaka in the near future. This event will provide practical information on preparing for extreme weather, earthquakes, and other challenges, helping strengthen the resilience of our community.

Here's to your (environmental) health

Tasman's reputation for outstanding food, exceptional beverages, and vibrant summer events is well known. Supporting all of this behind the scenes is our Environmental Health team, whose work helps ensure that every festival, market, and hospitality venue operates safely and responsibly.

Environmental Health Officers play a key role in protecting public health and maintaining confidence in the District's businesses. Their work spans food safety, environmental protection, and alcohol licensing, ensuring that operators meet legal requirements and that the community can enjoy local events without unnecessary risk.

A significant part of their role involves inspecting food businesses to confirm they are meeting national food safety standards. Officers also investigate a wide range of environmental health issues, including noise complaints, vermin, unsanitary conditions, and suspected foodborne illnesses. When public health issues arise, the team respond, assess the situation, and take enforcement action when required.

Beyond day-to-day compliance work, the Environmental Health team contributes to the development and review of key Council policies and bylaws affecting public spaces, alcohol control, and community wellbeing.

Another important responsibility is alcohol licensing. The team work closely with the District Licensing Committee, Police, the Medical Officer of Health, and Licensing Inspectors to process applications for new and renewed alcohol licences, Manager's Certificates, and special licences for events.

This collaborative approach helps ensure that licensing decisions support safe, well-managed hospitality and minimise alcohol-related harm.

"We love our job because every day we get to make a real difference – supporting local businesses, protecting community wellbeing, and helping ensure Tasman remains a great place to live and visit."



WHAT'S ON IN TASMAN



Second Hand Sunday

Sunday 22 February, 9.00 am – 2.00 pm.

Second Hand Sunday is a fun way for Nelson and Tasman residents to declutter and re-home unwanted household goods for free.

If you have items you want to give away, simply register online before 10.00 am Friday 20 February to be included on the list of participating addresses. Print off a poster to put on your mailbox and put your items on your driveway at 9.00 am on the day.

A list and map of participating addresses will be available to download from 12.00 pm Friday 20 February. Check out the map to plan your fossicking route and pick up some free second-hand items!

For more information and to sign up, go to tasman.govt.nz/shs.

Motueka Repair Café

Saturday 21 February, 10.00 am – 1.00 pm, Motueka Library.

A repair café offers free repairs to reduce waste and help the environment. Bring your broken items to be assessed and hopefully repaired by a friendly team of volunteers.

Tasman Asian Night Food Fair

Saturday 21 February, 4.00 pm – 9.00 pm, Washbourn Gardens, Richmond.

Enjoy handmade delights from our multi-cultural community and experience culture through food, costumes, music, and dance. Brought to you by Multicultural Nelson Tasman, it's a vibrant celebration for all ages to connect and enjoy with fabulous food stalls showcasing some of the tastiest cuisine from around Asia. Gold coin entry.

Outdoor movie night

Friday 27 February, 7.30 pm, Richmond Aquatic Centre.

The Waimea Youth Council is hosting an outdoor movie night featuring *How to Train Your Dragon* at the Richmond Aquatic Centre. The event starts at 7.30 pm with games and entertainment, plus food carts so you can grab a bite to eat before kicking back and enjoying the movie, which starts at 8.30 pm. Gold coin donation entry.

Aotearoa Light book launch

Thursday 26 February, 5.30 pm – 6.30 pm, Richmond Library.

Aotearoa Light takes readers on a journey through the wondrous and varied landscapes of Aotearoa/New Zealand's wilderness, through photographs that catch the light, and experiences and reflections that explore our role within Earth's connected ecosystem. Concerned about the challenges our warming planet brings, author Peter Laurenson presents images of Aotearoa that convey the benefits of wilderness; reminders of what we must protect and nourish, if humanity is to thrive. Books will be available to purchase for \$69.99.

Write a poem

Monday 2 March – Tuesday 31 March, Motueka Library.

Bring in a poem you have written to have it displayed for our week-long Autumn Garden Poetry Walk in Kiyosato Japanese Garden (from Monday 20 April to Friday 24 April). Please have your poem at the Motueka Library before 5.00 pm Tuesday 31 March. This is a partnership with the Poetry Circle group, which meets at the Motueka Library, 10.30 am – 12.00 pm on the last Thursday of every month.

NEWSLINE NOTICES



Council hui

Meetings will take place in person and be live-streamed. To view live or previous meetings, visit youtube.com/@tasmandistrictcouncilmeetings. Unless otherwise stated, all meetings will be held at the Council Chamber, 189 Queen Street, Richmond. For details, visit tasman.govt.nz/meetings-calendar.

Regional Accessibility Forum

Monday 23 February, 10.00 am – 12.00 pm.

Joint Regional Landfill Committee

Tuesday 24 February, 9.30 am. Nelson City Council, 110 Trafalgar Street.

Environment Regulatory and Operations Committee

Thursday 26 February, 10.00 am.

Arts funding available

Our Creative Communities Scheme has funding available to help groups and individuals with arts projects in Tasman – anything from music, theatre, festivals, mural painting, outdoor sculptures, art in public spaces, kapa haka, singing, art workshops and more.

Funded by Creative New Zealand, the Creative Communities Scheme is designed to support opportunities for communities to participate in the arts.

To find out more visit tasman.govt.nz/creative-communities and apply by Tuesday 10 March.

Alcohol applications

Visit tasman.govt.nz/alcohol-notice to see the latest alcohol licence applications.

Proposed road closure

Applicant: Dynamo Events – Cycling New Zealand.
Event: Age Group National Cycle Race.
Location: Kelling Road, Upper Moutere – from Moutere Highway to Neudorf Road intersection.
Date and time: 7.00 am Friday 10 April – 5.30 pm Sunday 12 April 2026. Road will be opened overnight, all residents will have access to their properties during these times.

Objections close 5.00 pm, Friday 6 March. Please send any objections to tania.brown@tasman.govt.nz.

Maritime events

Event activity: Tasman Bay Guardians Snorkel Day.
Date: 22 February 2026.
Location: Motueka River.

Event activity: JBNZ Annual Regatta.
Date: 28 February – 1 March 2026.
Location: Lake Rotoiti, St Arnaud.

Event activity: NZ Antique & Classic Boat Show.
Date: 6 – 8 March 2026.

Location: Kerr Bay, Lake Rotoiti.

Under the provisions of the Navigation Safety Bylaw 2024, the Harbourmaster has granted authorisations for these events. Due to navigation safety requirements, water users not involved in these events may be excluded from defined areas during these activities. Further details and any new events can be viewed at tasman.govt.nz/maritime-events.